

Stand Alone Press Recorder

Data collection in wheel shops

Instantly select diagrams by date, customer, wheel, axle, disc, or gear serial number.

Shop Manager™ can be used at the press for quick access to any mounting diagram.

Print mounting charts and assembly reports.

Print production reports.

Operated by touch screen, mouse or keyboard.

Technical Support is available 24 hours a day, 7 days a week for quick problem resolution. Remote administration and troubleshooting via internet for quick problem resolution for an annual fee.

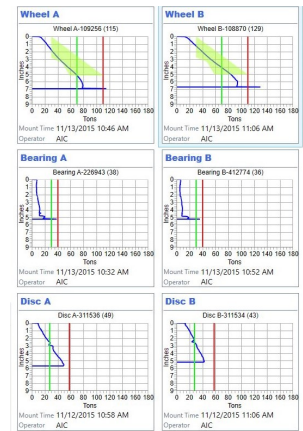
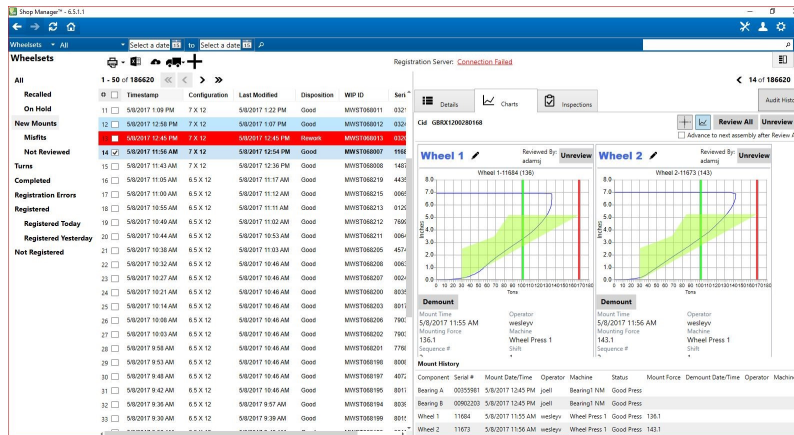
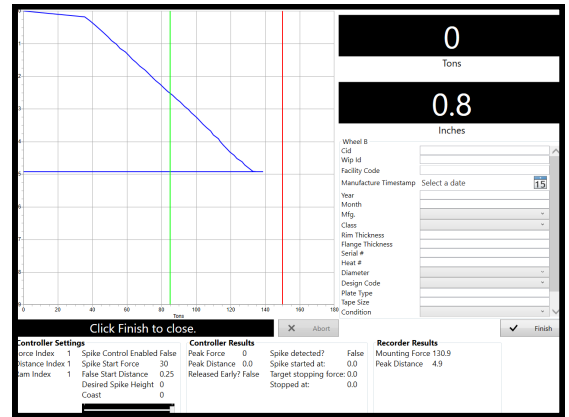
Check out our Our Wheel Shop Management Suite for complete end-to-end data collection in your shop.

The Stand Alone Press Recorder is a computerized system for recording pressure while mounting train wheels, axles, gears, gearboxes and discs. It generates mounting diagrams like those produced by the manual gauges but makes retrieval, reporting, inspections and supervisory functions much easier. By automating this process, you can streamline your day-to-day operations, produce more assemblies, record more accurate data and reduce press errors.

The SAPR can record mounting diagrams for wheels, bearings, gears and discs. Anything else you put on an axle that needs a mounting chart can be included. The UPR has the ability to build a database of specific assembly types and can associate the mounted components with each other — even when the components are assembled days later or at different presses. A personal computer logs pressure versus distance and displays a mounting diagram as each component is mounted. Because the mounting diagrams are computer generated, storage and retrieval operations are greatly simplified. The SAUPR produces reports for the AAR and production. All of this information is accessible via the Shop Manager™ at the press.

The SAPR meets or exceeds the requirement of the AAR MSRP G-II Rules 1.41 and 2.3.

No remote access is available for the Stand Alone Press Recorder.



Shop Manager™

Assembly Report

Reduces Errors

- Detects eight types of common misfits automatically
- Serial numbers can be scanned instead of manually entered
- Detects duplicate serial numbers
- Uses Precision Pressure and Displacement sensors
- Press monitoring ensures operation guidelines are followed

Reliable

- Meets all requirements of AAR G-II Rules 1.41 and 2.3
- Redundant data storage system available
- NEMA 12/IP55 cabinet protects your press information
- High resolution NEMA 12/IP55 touch screen monitor
- Chart data is password protected to prevent tampering



AIC, INC.
6100 GETTY DRIVE, SUITE N • NORTH
LITTLE ROCK, AR 72117
+1 501.834.9540
SALES@AICRAIL.COM • WWW.AICRAIL.COM