

Configuring USB Scanners for WPR 5

Using USB scanners with the WPR 5 requires the installation of a serial port emulator provided by Honeywell. Below are instructions to install the driver.

1. **Log in as an administrator** to the machine you are going to install the USB scanners on.
2. Download the Honeywell Serial Driver from our ftp site... <ftp://ftp.aicomputing.com/Drivers/HSM USB Serial Driver r1.9.zip>
3. Unzip it to a convenient location
4. Run the batch file for your operating system. Either Install_x64.bat or Install_x86.bat See Figure 1.

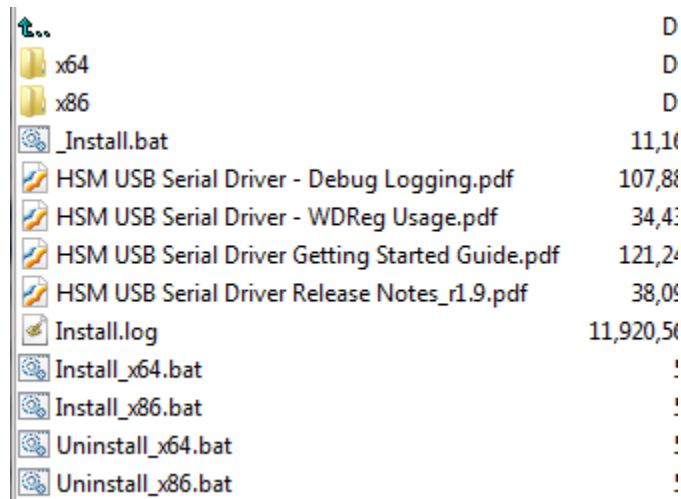


Figure 1 – Honeywell Serial Driver Files

5. Wait while the command window fills up with install information.
6. Plug in one or more scanners

7. Program the USB scanners for the WPR 5 from the programming sheet on the WheelShopAutomation.com website.

<http://wheelshopautomation.com/ProductHelp.aspx>

- Look for the Barcode Programming Sheets under the area titled Support Files. Refer to your scanners Model # (1900,4600, 3800G) to determine whether you need 2D ... or 1D...
- Print the page titled “Wheel Press Recorder with USB Cable” and scan each barcode in order.

8. Open Device Manager on your computer.

9. Expand the Ports tree (Figure 2).

10. Note what com port the scanner is assigned to.

NOTE: The com ports only show up when the scanner is plugged in and programmed properly.

11. Configure WPR 5 for a serial scanner on that port.

- Log in to WPR as an administrator
- Click the Setup tab at the bottom
- Click the Scanners tab at the top
- Select each scanner in the list and make sure it is set to Serial. Assign the com port from step 10. (Figure 3)
- Click on Log Out tab at the bottom and then exit the application and restart

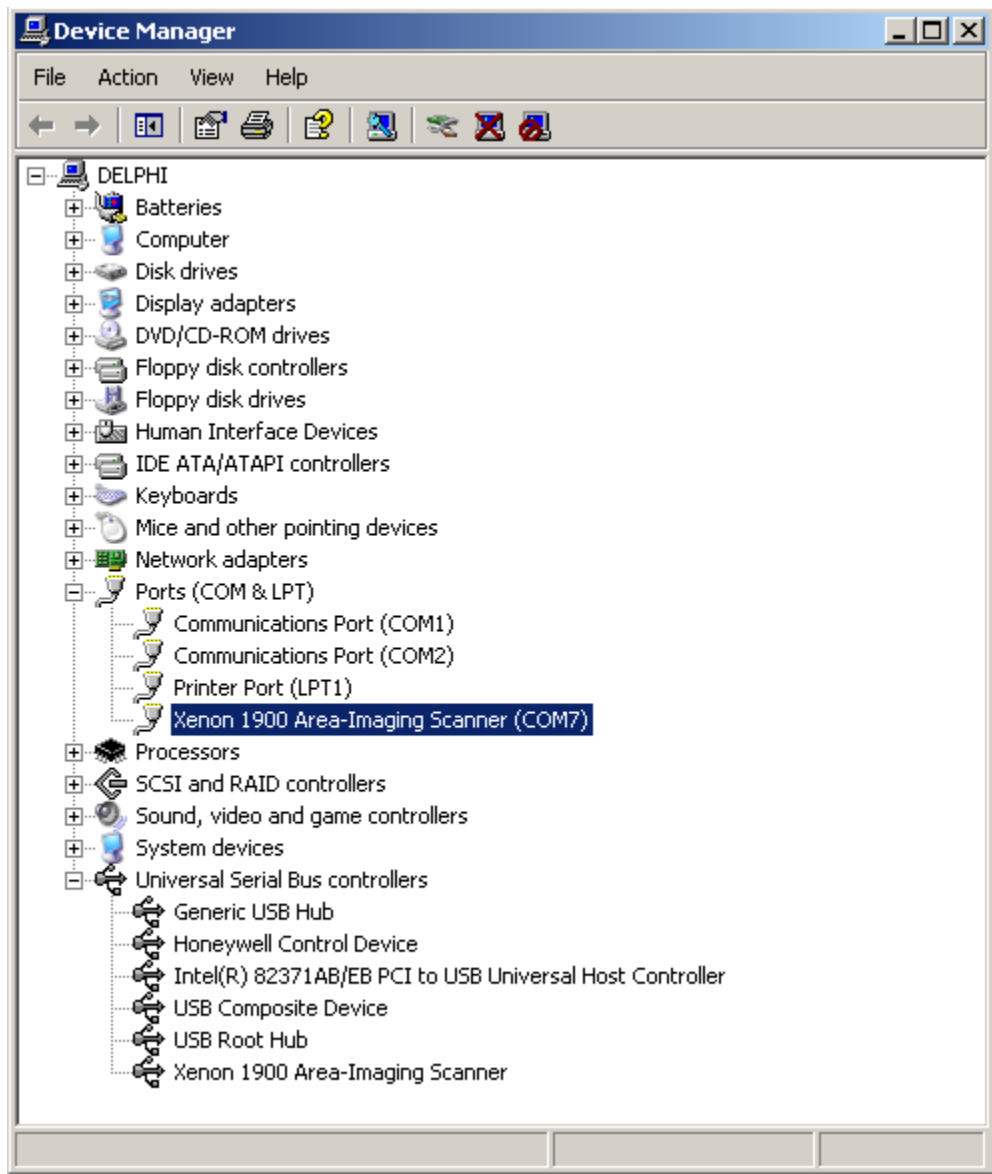


Figure 2 – Device Manager

Scanner Type

Serial Ethernet USB

Com Port: **Com 4**

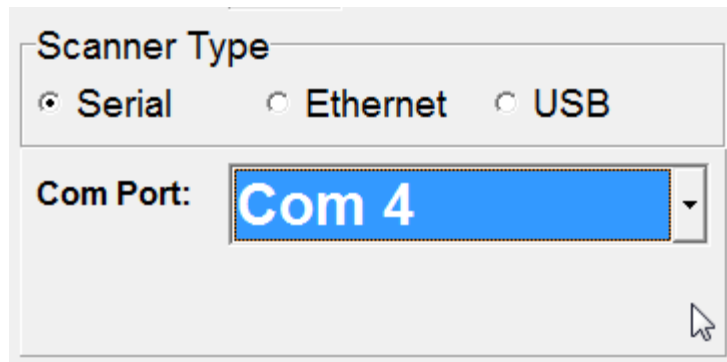


Figure 3 – Scanner Setup