

Car Builder

A component of the Railcar Integrated Maintenance Suite (RIMS)

User Guide



Railcar Integrated
Maintenance Suite

DATA COLLECTION • AUTOMATION

Contents

- Introduction 1
- System Requirements 2
- Getting Started..... 3
 - Installing Car Builder 3
 - Initial Setup 9
 - Database Connection Settings 9
- Menu 10
 - Options..... 10
 - Connection Settings 10
 - System..... 11
 - General..... 12
 - Network Diagnostics 13
- Log on / Log off 14
- Select Equipment 15
- Component Application 16
 - Component Details 17
 - Applying Components..... 18
- Equipment Search 19
- Add New Equipment 21
- Appendix A: Frequently Asked Questions (FAQ) 22
- Appendix B: License 23
- Appendix C: Contact Information 25

Introduction

Car Builder is a mobile application designed to assist in applying components to the equipment. Car Builder is intended for use in the shop at the point in the process where the components are physically applied to the car. The component CID and equipment location are collected in the shop and can be viewed from Car Manager (another component of RIMS) and submitted to Railinc. For more information about our other RIMS components please visit our website at www.aicrail.com or [contact us](#).

Car Builder requires network access to an instance of the RIMS database on the local network. Refer to the [Initial Setup](#) for more information

System Requirements

This application has minimum system requirements as described below. These requirements must be met in order for the application to operate as designed.

This application supports the following Microsoft Windows Mobile operating systems.

- Windows Mobile 6.5 or greater

The application requires the Microsoft .Net Compact Framework 3.5 which can be obtained from Microsoft at <http://www.microsoft.com/en-us/download/details.aspx?id=65>

The application requires the following hardware at a minimum.

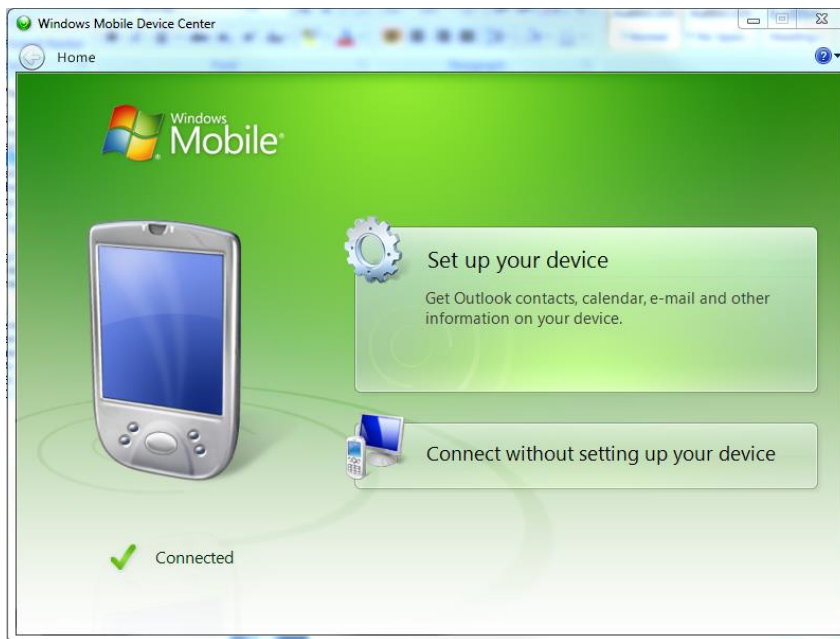
- 500MHz Processor
- 256MB RAM
- 100 MB available disk space
- Wireless Networking Adapter

Getting Started

Installing Car Builder

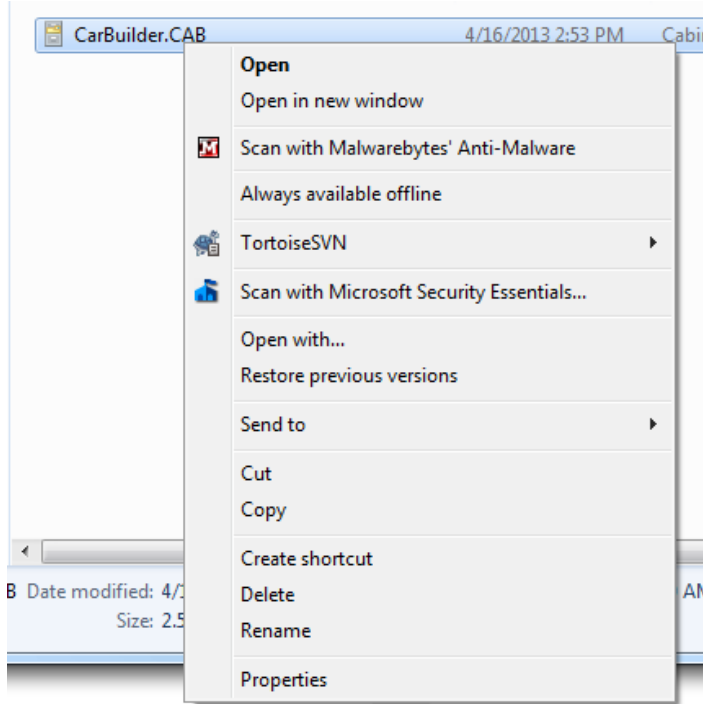
To install Car Builder, you will need a desktop computer with Windows Mobile Device Center. Connect your handheld to the desktop computer using the docking station and a USB cable.

NOTE: If your computer is running a version of Windows earlier than Windows Vista, you will need to use ActiveSync instead of Mobile Device Center.

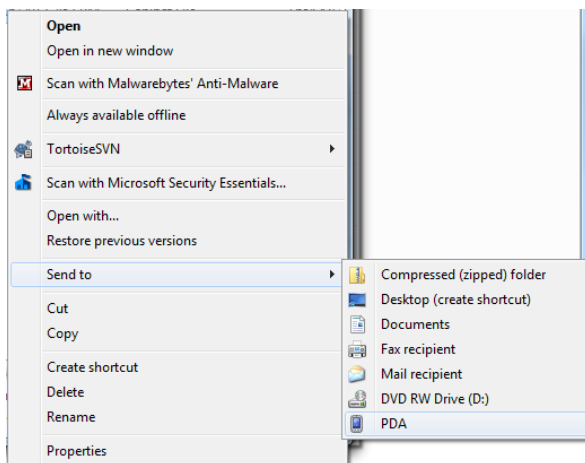


To install Car Builder select 'Connect without setting up your device' or set up your device. Once the handheld is connected you can transfer the installation file to the device.

Locate the file CarBuilder.cab and right-click.



Select 'Send to->PDA' to transfer the CAB file to the device. By default it will be located in the root directory of the device.



If your computer does not allow you to send CarBuilder.CAB directly to your handheld, you can use the File Management feature from Windows Mobile Device Center. This will open a Windows Explorer window, and you can then copy and paste the CarBuilder.CAB file onto your device.



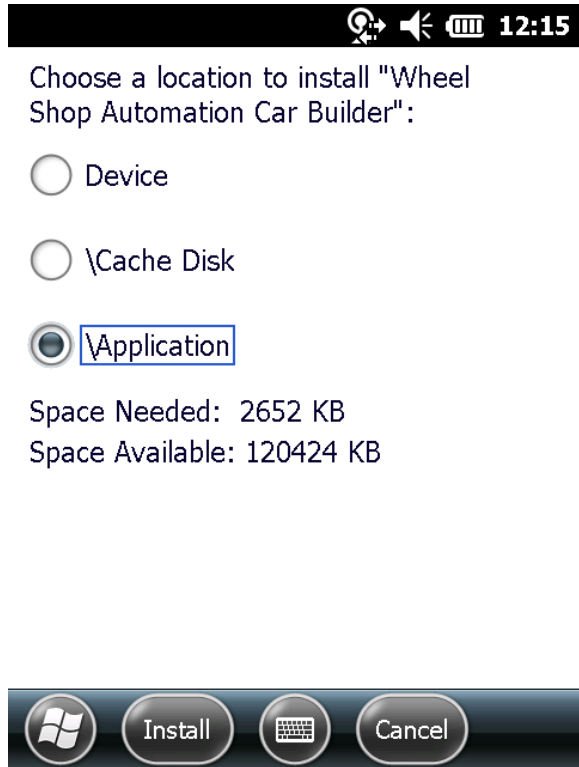
Once the file CarBuilder.CAB has been transferred to the device it will need to be installed. Click the Start Menu icon and browse to the File Explorer application.



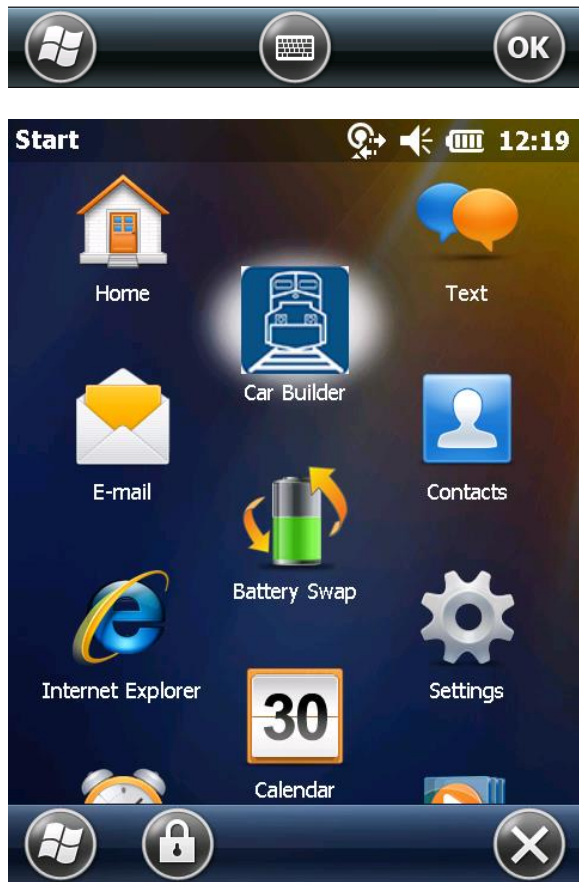
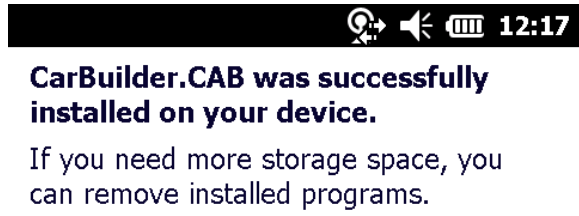
Locate the CarBuilder.CAB file transferred to the device in the previous and press enter or click the file to install.



When prompted, choose the location where you want to install Car Builder and tap Install.



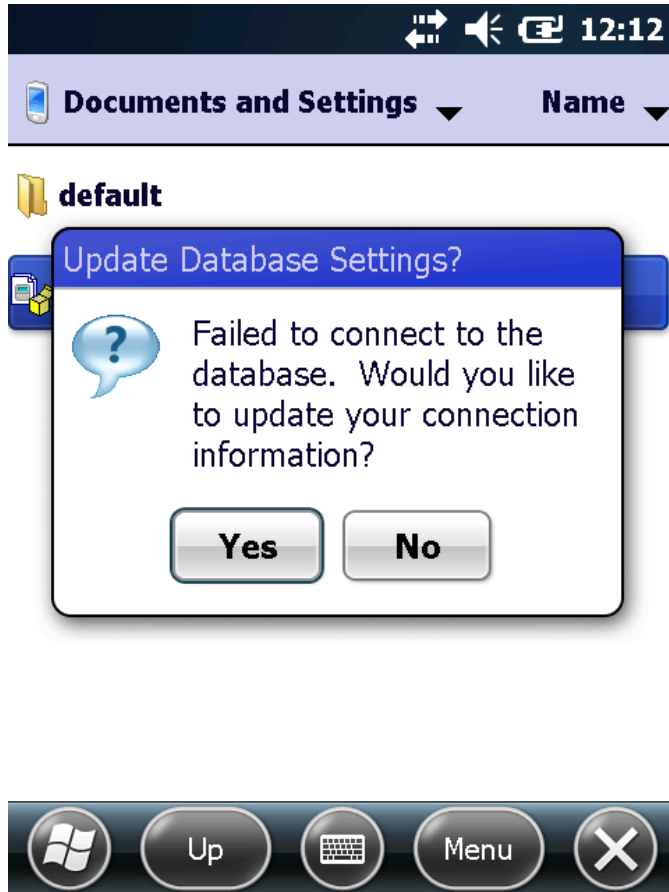
Once the installation is completed, tap Ok to exit the installer.



Initial Setup

Database Connection Settings

The first time you run Car Builder you will be prompted to enter your database connection settings. Click Yes to display the [Connection Settings](#) screen. See the following section for details on configuring your [Connection Settings](#).



Menu

Options

Connection Settings

Specify the Database Connection Settings

Server Name

Log on to the server

- Use Windows Authentication
 Use SQL Server Authentication

User Name:

Password:

Save my password

Connect to the database

- Select or enter a database name

refresh

Test Connection

General	System	Connection	
	Cancel		Done

Use this tab to set up the database and server connection settings. Enter the name or IP address of the server on which your database is stored along with the appropriate login credentials. Then, click the 'Refresh' button next to the database dropdown menu. The dropdown menu should automatically populate and allow you to select your database; if your database does not appear, try entering the database name manually. Be sure to use the 'Test Connection' button before selecting 'Done'.

System

This device belongs to:

This device is:

Car Builder 1	▼
Association Service	
Car Manager	
Car Builder 1	
Car Builder 2	
Global	



The 'System' tab is used to assign a Machine ID to the Car Builder app. In a shop using multiple instances of Car Builder, assign each handheld to a different Car Builder ID.

General

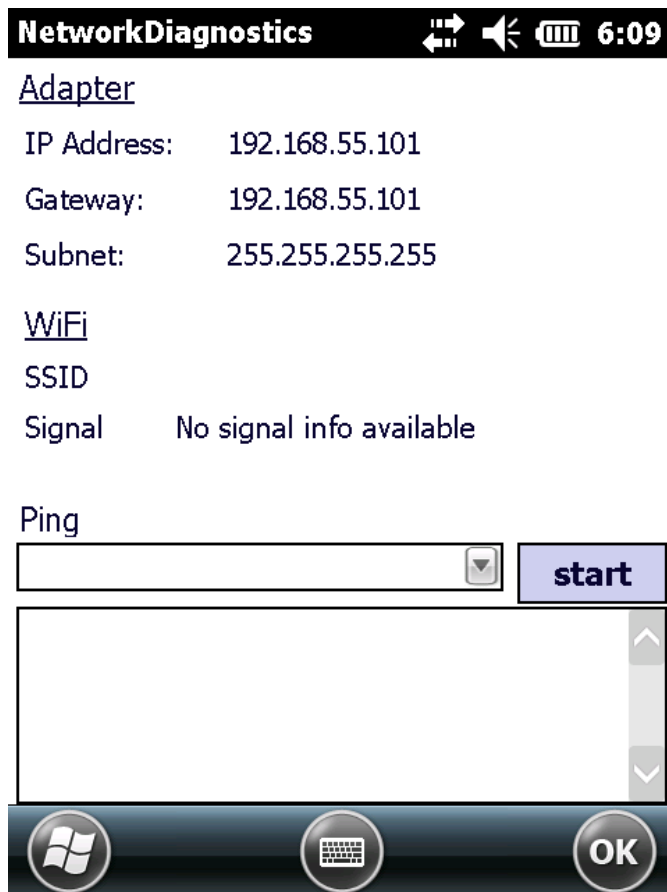
Intentionally left blank.

Network Diagnostics

In the event that Car Builder is not functioning properly and you believe this to be the result of network related errors, you can access the Network Diagnostic tools from the menu.

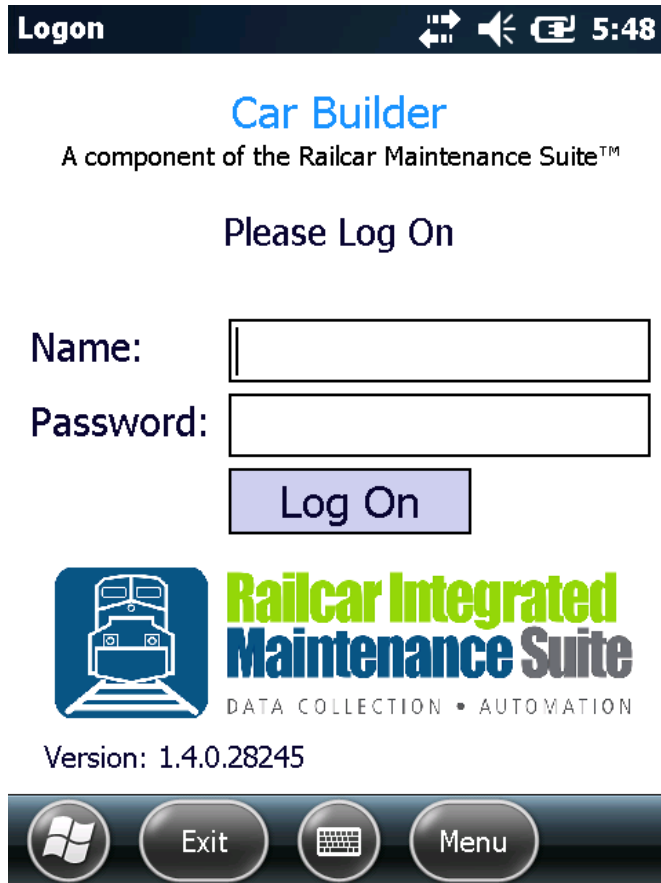


The Network Diagnostics screen displays information about your device's current network status as well as providing a Ping function. To ping a networked resource, enter the destination IP address in the Ping field and click Start. The results will be displayed in the box at the bottom of the screen.



Log on / Log off

Each user is given a unique user name and password for the RIMS system for authentication and accountability. You must provide your user name and password each time Car Builder starts before you can begin. Your log on also determines what functions you have permissions to perform. For more information about permissions and users refer to **the Car Manager User Guide**.



Logon 5:48


Car Builder
A component of the Railcar Maintenance Suite™

Please Log On

Name:

Password:

Log On

 **Railcar Integrated Maintenance Suite**
DATA COLLECTION • AUTOMATION

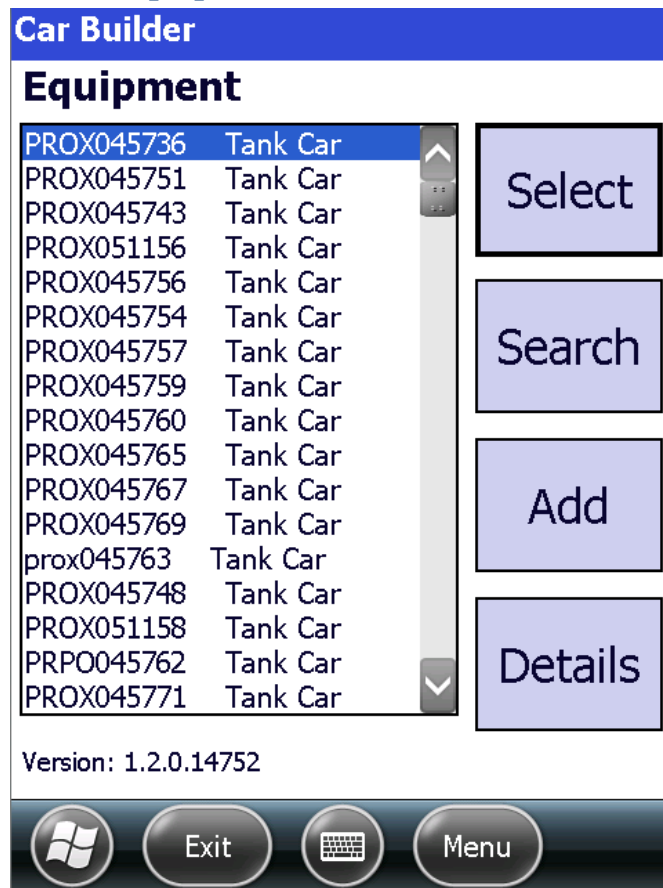
Version: 1.4.0.28245

Exit Menu

Selecting the 'Menu' button will open the [Network Diagnostics](#) screen.

Selecting the 'Exit' button from the main screen will log out the current user and exit Car Builder.

Select Equipment



The Car Builder Select Equipment screen lists existing equipment and provides navigation to other parts of the application. From this screen, users can access the [Component Application](#), [Equipment Search](#), and [Add New Equipment](#) screens.

Component Application

Car Builder

Equipment

ID: PROX045769

Type: Tank Car

Details

Component

Type: Wheelset

Location: Position 2

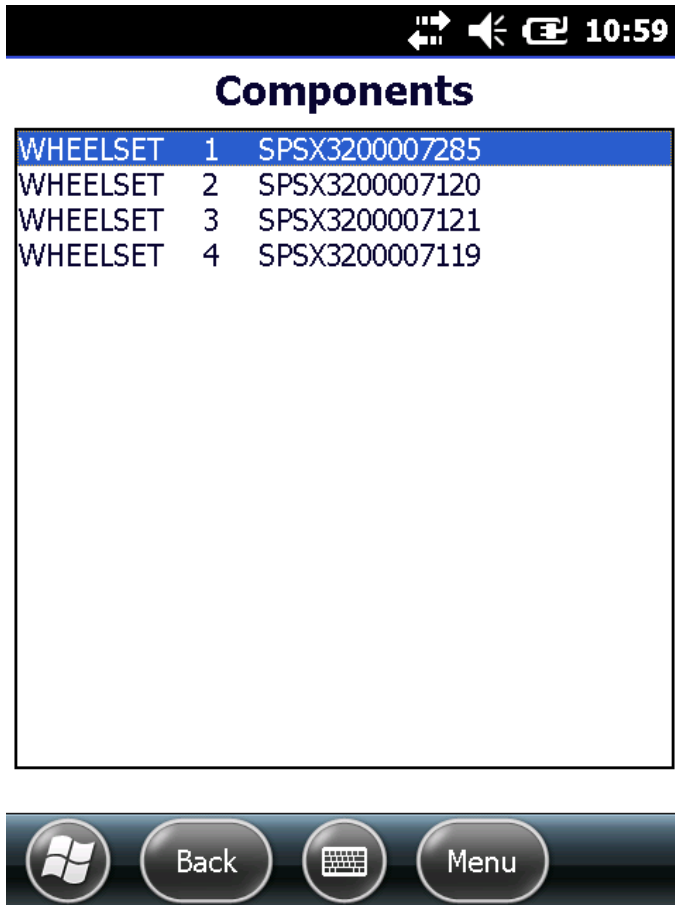
ID: SPSX3200007120

Save



After creating or selecting an equipment in Car Builder, the Component Application screen is displayed. This screen lists the ID and Type of the current equipment and allows the user to add components to the equipment.

Component Details



Selecting the 'Details' button from the Component Application screen displays a list of all components currently attached to the selected equipment. Use the 'Back' button to navigate back to the Equipment Screen.

Applying Components

Component

Type:

Location:

ID:

To add a component to the selected equipment, choose the component's type and location and then scan its CID tag. Once scanned, Car Builder automatically saves the component to the current position.

Component

Type:

Location:

ID:

at saved.

If the CID tag cannot be scanned, the user can manually enter the ID information by tapping on the ID box and using the keypad to type the ID. In this case, the user must then select 'Save' before Car Builder will save the component at the current position (it does not auto-save as with scanning tags).

If the component you entered is part of a Truck assembly, Car Builder will open a prompt to add all the components from the corresponding truck. Selecting yes will add all components currently tied to the same truck as the entered component. For more information about trucks, see the Truck Builder or Car Manager user guides.

After saving a component, Car Builder will automatically move on to the next Location in sequence.

NOTE: Car Builder will clear the position field after scanning in a truck because truck positions are not sequential. The user must manually select the truck location each time based on which side the WIPID tag is on.

Equipment Search

Car Builder

Equipment ID Search

Search



Enter an Equipment ID to search for an existing equipment. If your handheld is equipped with an AEI tag reader, you can also scan the AEI tag on the car you want to find.

If the equipment cannot be found, click yes to display the [Add New Equipment](#) screen and create a new equipment, or click cancel and verify that you entered the correct Equipment ID.



Add New Equipment

Add Equipment

ID:

Type:

Truck Count: 2

Due:

Description:



The Add New Equipment screen is used to create new equipments which can then have components added using the Equipment Screen. If your handheld device has an AEI Tag reader, you may scan in the Equipment ID; otherwise, you must enter it manually. Clicking 'Done' will create the new equipment and open the [Component Application](#) screen.

Always confirm the Equipment ID after entering. In the event that an ID is entered with fewer than six (6) digits, Car Builder automatically pads the beginning of the number with zeros (0). For example, if the above equipment was created without the last '1', it would be saved as TEST010000.

Appendix A: Frequently Asked Questions (FAQ)

Q. When I scan a WIP label for a truck, Car Builder clears out the position field; why?

A. Because a truck position indicates not just its physical location but also its orientation, the possible positions in Car Builder are non-sequential. As a result, an operator must manually choose the truck position. Car Builder clears the position field to ensure that a truck is not saved in the incorrect position.

Q. The Equipment ID that got saved is not what I entered; what happened?

A. Equipment IDs have a strict predefined format. They are required to be in the format XXXYYYYYY where the Xs are a combination of up to four letters and the Ys are six numbers. If you enter less than four letters or less than six numbers, Car Builder pads your entry to conform to the standard format by adding spaces to the end of your letters and zeros to the beginning of your numbers. For example, if you entered 'T22' in the Equipment ID field of the [Add New Equipment](#) screen, Car Builder would create a new equipment with 'T 000022' as its Equipment ID. If you try to add an equipment and insert a letter after the first number (e.g. TEST0t0002), Car Builder will enter all six numbers as zeros (TEST000000). Because of these behaviors, it is VERY IMPORTANT that you always confirm correct entry of Equipment IDs when creating new equipments.

Q. When I try to scan/save a component on an equipment, I get an error message saying "Component ID already exists."

A. Each component can be linked to only one equipment at a time. The most likely reason you are getting this error message is because the Component ID you tried to enter is already saved to this or another equipment. Confirm that you have entered the correct ID. If you have, it is likely that this ID was incorrectly entered previously. Using Car Manager, you should be able to search for the Component ID and locate the equipment to which it has been saved. This should help you identify the problem.

Appendix B: License

RAILCAR INTEGRATED MAINTENANCE SUITE END USER LICENSE AGREEMENT

IMPORTANT NOTICE: Read Before Installing or Using Software

The following software products offered to you directly by Arkansas Industrial Computing (“AIC”) of 6100 Getty Drive, Suite N, North Little Rock, AR 72117 (voice 501-834-9540) is offered only for use in accordance with the terms and conditions of the RMS End User License Agreement below.

BY INSTALLING OR USING ANY LICENSED SOFTWARE YOU WILL INDICATE THAT YOU HAVE READ, UNDERSTOOD, AND ACCEPT THESE TERMS AND CONDITIONS AND BECOME A PARTY TO THIS AGREEMENT. IF YOU ARE UNABLE OR UNWILLING TO ENTER AND COMPLY WITH THIS AGREEMENT, DO NOT ATTEMPT TO INSTALL OR USE ANY LICENSED SOFTWARE. INSTEAD, PROMPTLY RETURN ANY MATERIALS THAT WERE PROVIDED TO YOU. CONTACT AIC IF YOU WISH TO DISCUSS THE AGREEMENT BELOW, BEFORE YOU ATTEMPT TO INSTALL OR USE ANY PRODUCT.

RMS END USER LICENSE AGREEMENT

LICENSE: Subject to the terms and conditions of this Agreement, AIC hereby grants to you a non-exclusive, non-transferable license to use the Licensed Software on one computer. This includes reproducing the Licensed Software, but only as reasonably required to ensure appropriate back-up practices are followed. All copies must bear all copyright and other proprietary rights notices which appear on the Licensed Software as originally provided by AIC. Subject to the license expressly granted above, you obtain no right, title, interest or other license in or to any Product, including but not limited to any copyright, patent, trade secret, trademark, or other proprietary rights therein. All whole and partial copies of the Licensed Software remain the property of AIC and will be considered part of the Licensed Software for the purpose of this Agreement.

Unless expressly permitted by this Agreement, or otherwise by applicable law or by AIC in writing, you shall not: (i) use, reproduce, modify, adapt, translate, update or transmit any Licensed Software, in whole or in part; (ii) rent, lease, license, transfer, or otherwise provide access to any Licensed Software; (iii) alter, remove, or cover trademarks or proprietary notices in or on any Licensed Software; (iv) export any Licensed Software from the country in which it was provided to you by AIC; (v) decompile, disassemble, decrypt, extract or otherwise attempt or assist others to reverse engineer any Licensed Software, except as necessary, when permitted by an applicable law, to correct defects or achieve interoperability with complimentary programs, for your purposes only, but only if AIC has refused to provide the necessary information or assistance. Unless AIC has provided you with express written consent, the Licensed Software may not be used in any application in which the failure of the Licensed Software could lead directly to death, personal injury, or severe physical or property damage (collectively, “High-Risk Activities”). AIC EXPRESSLY DISCLAIMS ANY EXPRESS OR IMPLIED WARRANTY OR CONDITION OF FITNESS FOR HIGH-RISK ACTIVITIES.

WARRANTY: AIC cannot warrant that any Licensed Software will function in accordance with related documentation in every combination of hardware platform, software environment, and Licensed Software configuration.

LIMITATIONS: EXCEPT AS EXPRESSLY WARRANTED ABOVE, THE LICENSED SOFTWARE AND ANY ASSOCIATED AIC MEDIA ARE PROVIDED “AS IS” WITHOUT OTHER WARRANTIES OR

CONDITIONS OF ANY KIND, INCLUDING BUT NOT LIMITED TO IMPLIED WARRANTIES AND CONDITIONS OF MERCHANTABILITY, FITNESS FOR A PARTICULAR PURPOSE AND NON-INFRINGEMENT. YOU ASSUME THE ENTIRE RISK AS TO THE RESULTS AND PERFORMANCE OF THE LICENSED SOFTWARE. NOTHING STATED IN THIS AGREEMENT WILL IMPLY THAT THE OPERATION OF ANY LICENSED SOFTWARE WILL BE UNINTERRUPTED OR ERROR FREE OR THAT ERRORS WILL BE CORRECTED. OTHER WRITTEN OR ORAL STATEMENTS BY AIC, ITS REPRESENTATIVES OR OTHERS DO NOT CONSTITUTE WARRANTIES OF AIC.

IN NO EVENT WILL AIC (OR IT'S OFFICERS, EMPLOYEES, AGENTS, SUPPLIERS, DISTRIBUTORS, OR LICENSORS – COLLECTIVELY "ITS REPRESENTATIVES") BE LIABLE TO YOU FOR ANY INDIRECT, INCIDENTAL, SPECIAL, OR CONSEQUENTIAL DAMAGES WHATSOEVER, INCLUDING BUT NOT LIMITED TO LOST REVENUE, LOST OR DAMAGED DATA OR OTHER COMMERCIAL OR ECONOMIC LOSS, ARISING OUT OF OR RELATING TO ANY BREACH OF THIS AGREEMENT, ANY USE OR INABILITY TO USE THE LICENSED SOFTWARE, OR ANY CLAIM MADE BY A THIRD PARTY, EVEN IF AIC OR IT'S REPRESENTATIVES HAVE BEEN ADVISED OF THE POSSIBILITY OF SUCH DAMAGE OR CLAIM.

IN NO EVENT WILL THE AGGREGATE LIABILITY OF AIC AND IT'S REPRESENTATIVES FOR ANY DAMAGES OR CLAIMS ARISING OUT OF OR RELATING TO THIS AGREEMENT OR ANY LICENSED SOFTWARE, WHETHER IN CONTRACT, TORT, OR OTHERWISE, EXCEED THE LICENSE FEES YOU PAID FOR THE USE OF THE LICENSED SOFTWARE UNDER THIS AGREEMENT. AIC'S AND IT'S REPRESENTATIVE'S LIMITATION OF LIABILITY IS CUMULATIVE WITH ALL OF AIC'S AND IT'S REPRESENTATIVE'S PAYMENTS IN SATISFACTION OF THEIR LIABILITIES BEING AGGREGATED TO DETERMINE SATISFACTION OF THE LIMIT.

These limitations shall apply whether or not the alleged breach is a fundamental breach of contract. Some jurisdictions curtail limitations of liability for incidental or consequential damages, and/or limitations of implied warranties. Therefore, to the extent prohibited by applicable law, the above limitations may not apply to you.

TERM: This Agreement commences upon your acceptance (as described above) and will end when terminated. You may terminate this Agreement at any time. It will be deemed to terminate immediately if you fail to comply with any material term herein. Upon termination, your license rights end and you shall immediately destroy all whole or partial copies of all Licensed Software in your possession or control.

GENERAL: This Agreement is governed by and will be construed in accordance with the laws in force in the State of Arkansas, United States of America without regard to the conflict of laws provisions therein. The parties expressly disclaim the provisions of the United Nations Convention on Contracts for the International Sale of Goods. This Agreement constitutes the entire agreement between you and AIC pertaining to the Licensed Software and any associated AIC media, and supersedes all prior or contemporaneous agreements, understandings, negotiations, and discussions, whether oral or written. No amendment or waiver of any term of this Agreement will be binding unless executed in writing by the parties. Subject to the export restrictions provided above, you are entitled to assign this Agreement to a third party who has provided AIC with prior written acknowledgement of their acceptance of the terms and conditions herein. In such a case you will transfer all copies of the Licensed Software and any associated media to the assignee. The provisions of this Agreement will ensure to the benefit of and will be binding upon the parties and their respective successors and permitted assigns. If any provision of this Agreement is held by a court of competent jurisdiction to be illegal, invalid, or unenforceable, the remaining provisions shall remain in full force and effect.

Appendix C: Contact Information

AIC Rail
6100 Getty Drive
Suite N
Sherwood, AR 72117

Online Support

Visit our website at www.aicrail.com for 24/7 technical information and available downloads
Email us at support@aicrail.com

Phone Support (Existing support contract or credit card required)

Call 1-501-834-9540 or 1-877-834-9540 (toll free)